

ITEM NO.	PART NUMBER	QTY.
1	Base	1
2	Frame	1
3	Axle	1
4	Main Bearing	1
5	Flywheel	1
6	Crank	1
7	Crank Pin	1
8	Cylinder	1
9	Cylinder Cover	1
10	Pivot Pin	1
11	Piston	1
12	Collar	1

HOBBY-MACHINIST SINGLE OSCILLATOR

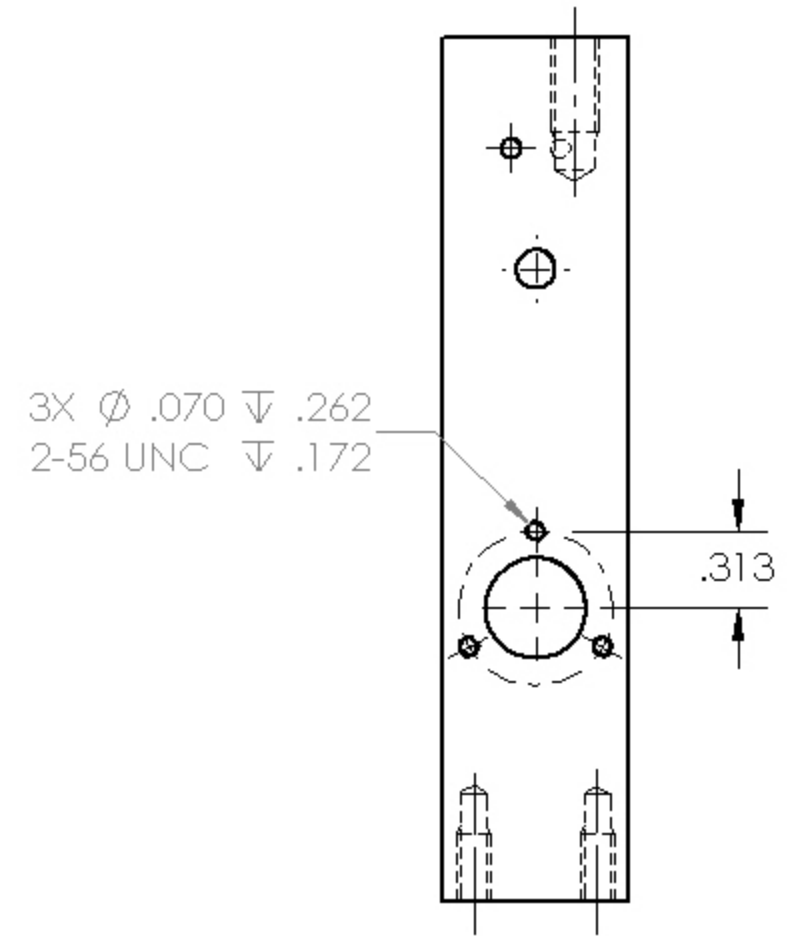
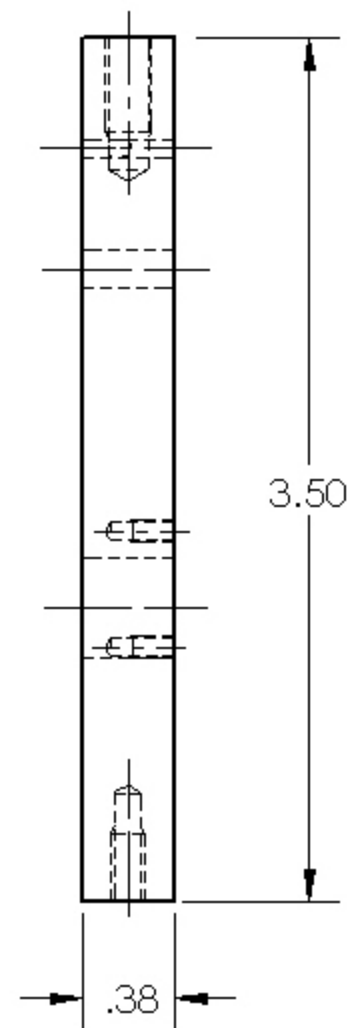
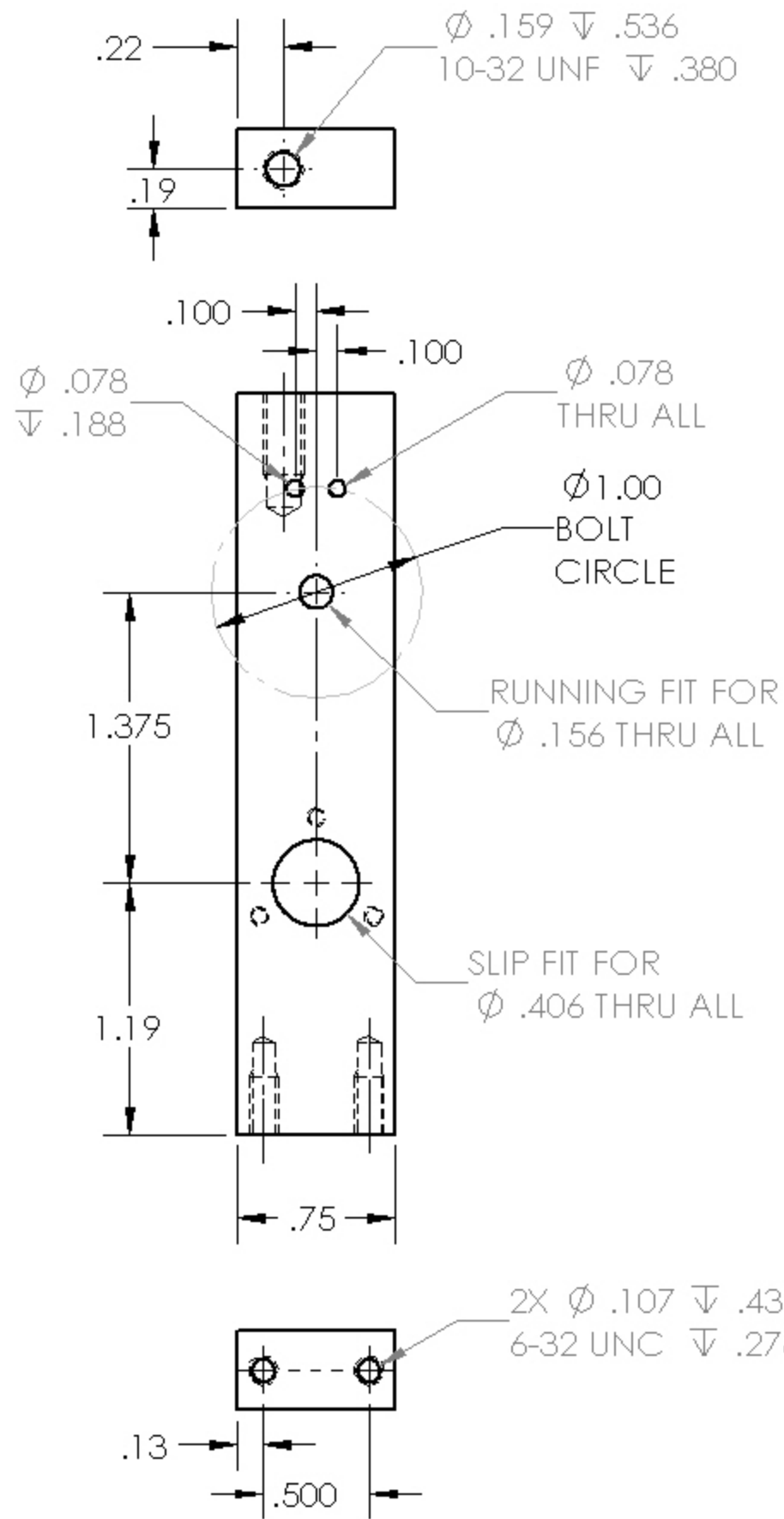
TOLERANCES:

ANGULAR: $\pm .5^\circ$
TWO PLACE DECIMAL: $\pm .005$
THREE PLACE DECIMAL: $\pm .002$

1 REQUIRED
SEE B.O.M.

SCALE: 1=2

DRAWN BY R. LEETE 178EP11



SOME HIDDEN LINES
 NOT SHOWN
 FOR VIEW CLARITY

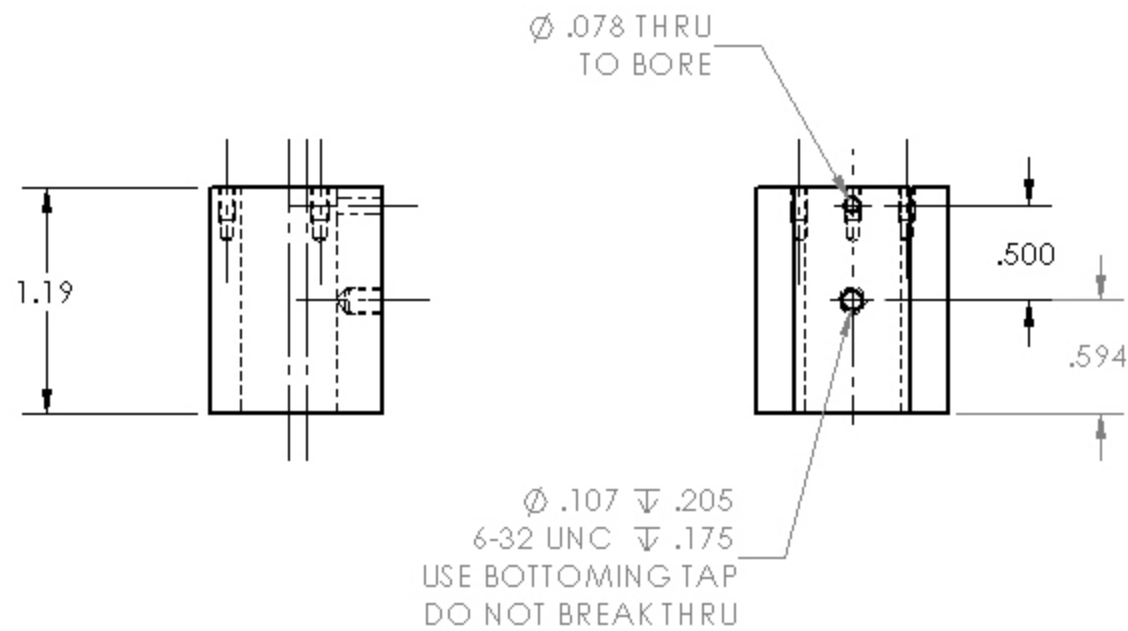
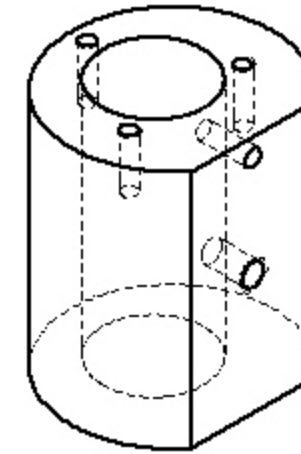
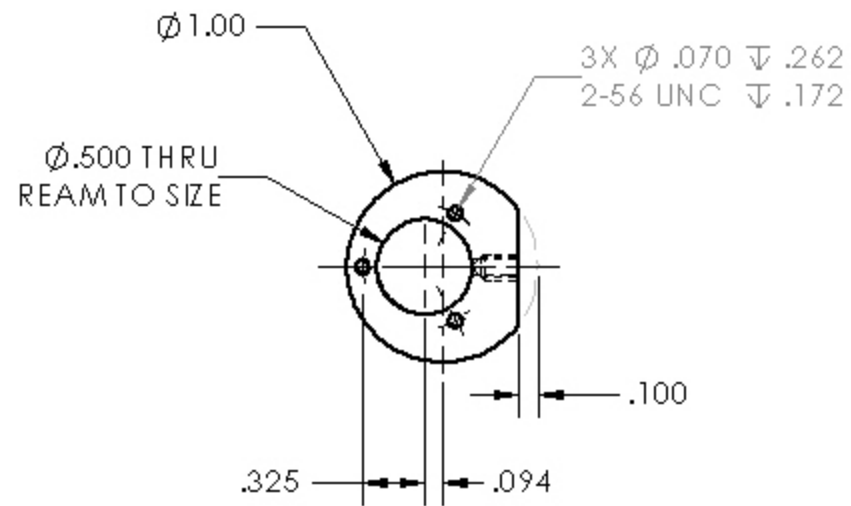
HOBBY-MACHINIST FRAME

TOLERANCES:
 ANGULAR: $\pm .5^\circ$
 TWO PLACE DECIMAL: $\pm .005$
 THREE PLACE DECIMAL: $\pm .002$

1 REQUIRED
 BRASS

SCALE: 1=1

DRAWN BY R. LEETE 17SEP11



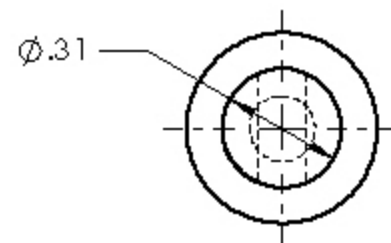
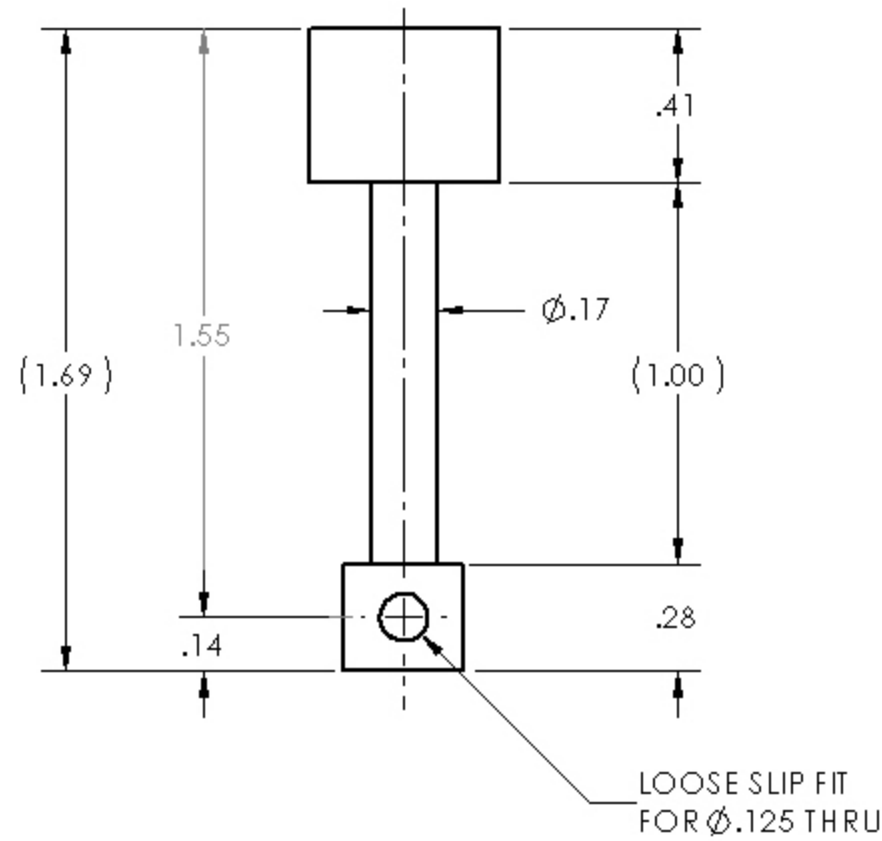
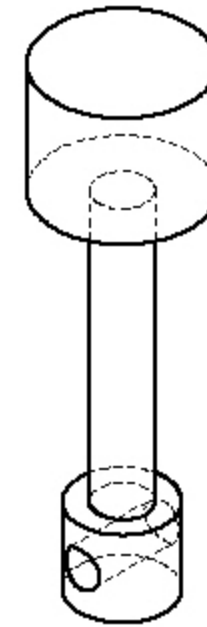
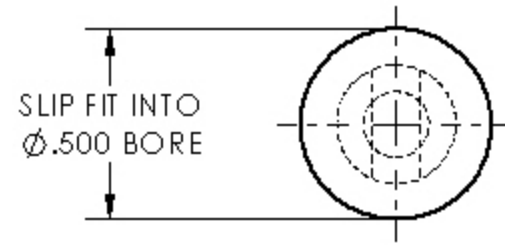
HOBBY-MACHINIST CYLINDER

TOLERANCES:
 ANGULAR: $\pm .5^\circ$
 TWO PLACE DECIMAL: $\pm .005$
 THREE PLACE DECIMAL: $\pm .002$

1 REQUIRED
BRASS

SCALE: 1=1

DRAWN BY R. LEETE 178 EP11



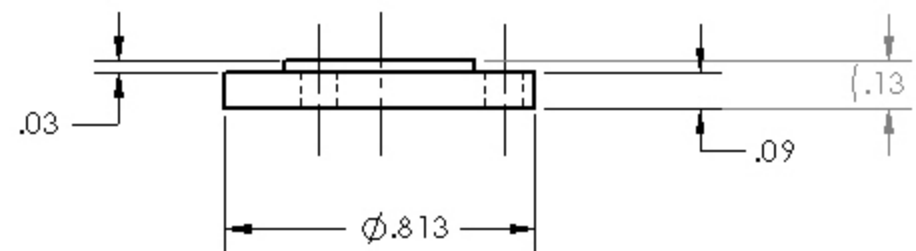
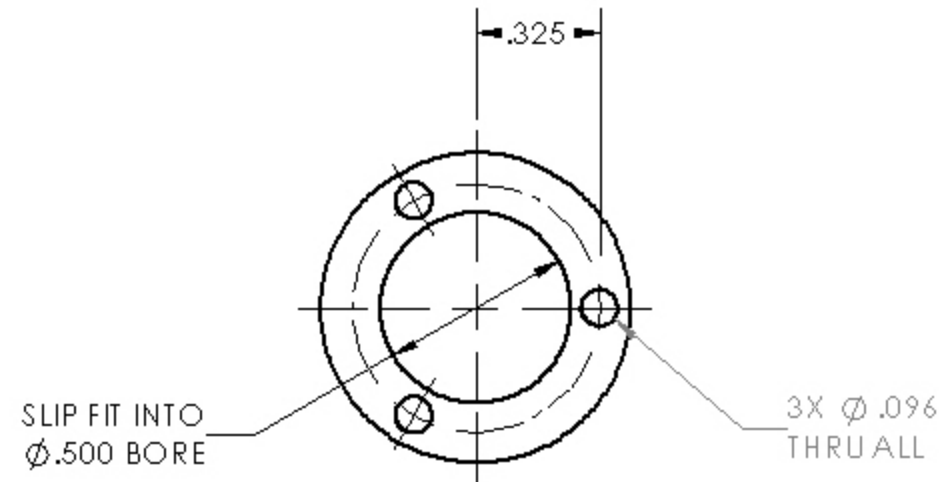
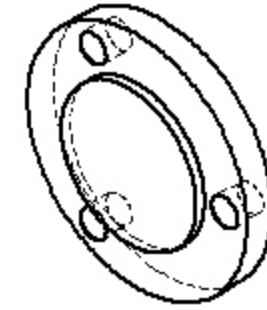
HOBBY-MACHINIST PISTON / ROD

TOLERANCES:
ANGULAR: $\pm .5^\circ$
TWO PLACE DECIMAL: $\pm .005$
THREE PLACE DECIMAL: $\pm .002$

1 REQUIRED
BRASS

SCALE: 2=1

DRAWN BY R. LEETE 178EP11



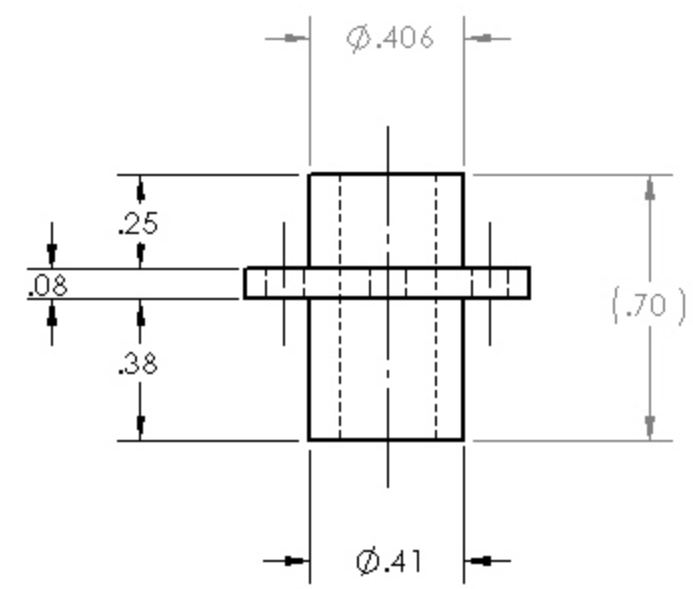
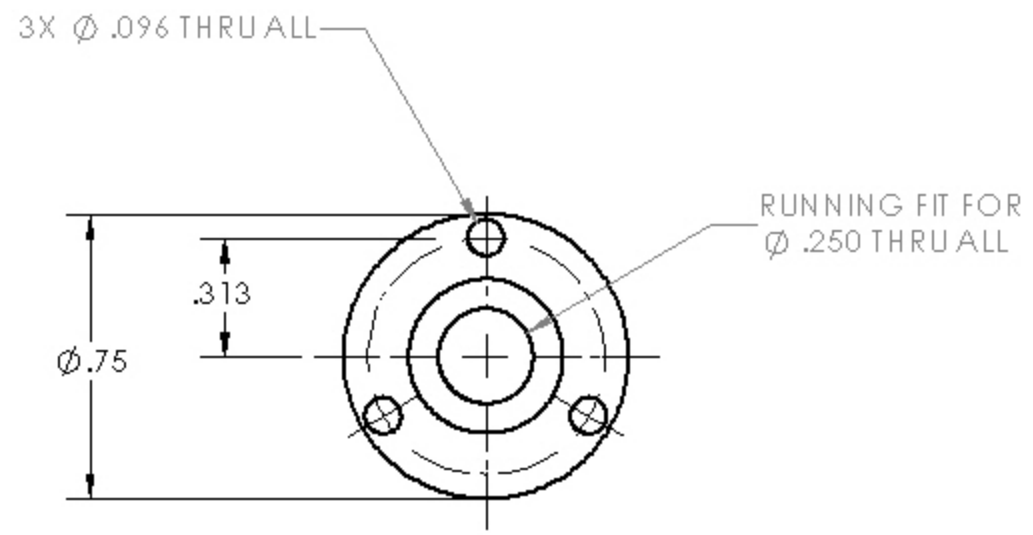
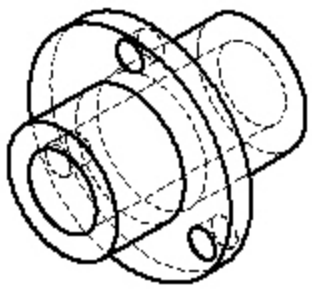
HOBBY-MACHINIST CYLINDER COVER

TOLERANCES:
ANGULAR: \pm .5°
TWO PLACE DECIMAL: \pm .005
THREE PLACE DECIMAL: \pm .002

1 REQUIRED
BRASS

SCALE: 1=1

DRAWN BY R. LEETE 178 EP11



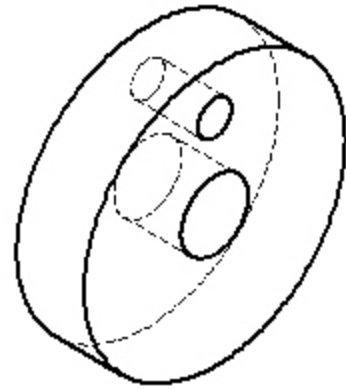
HOBBY-MACHINIST MAIN BEARING

TOLERANCES:
ANGULAR: $\pm .5^\circ$
TWO PLACE DECIMAL: $\pm .005$
THREE PLACE DECIMAL: $\pm .002$

1 REQUIRED
BRASS

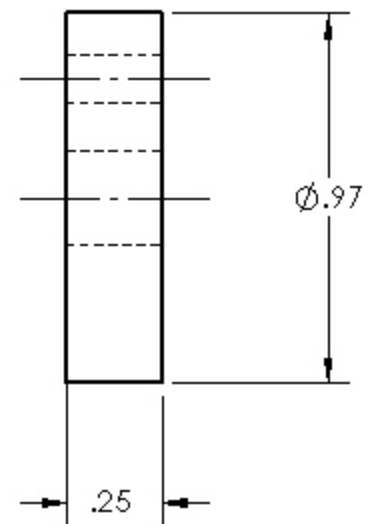
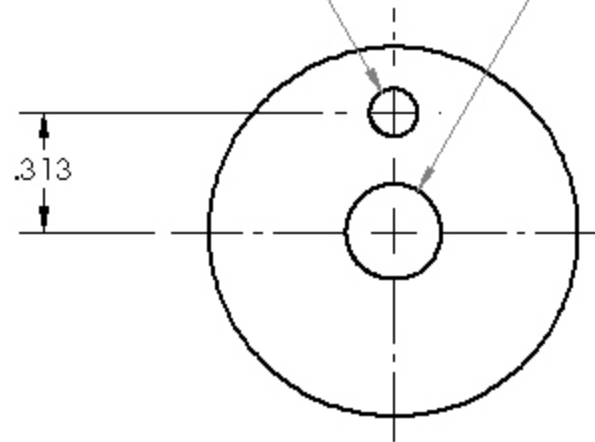
SCALE: 2=1

DRAWN BY R. LEETE 178EP11



PRESS FIT FOR
 \varnothing .125 THRU ALL

PRESS FIT FOR
 \varnothing .250 THRU ALL



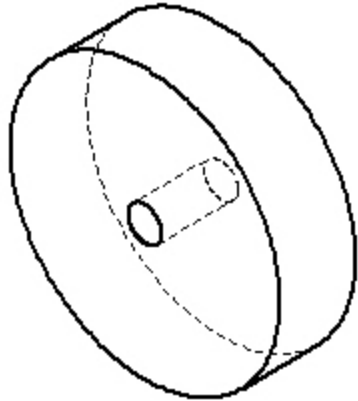
HOBBY-MACHINIST CRANK DISC

TOLERANCES:
ANGULAR: $\pm .5^\circ$
TWO PLACE DECIMAL: $\pm .005$
THREE PLACE DECIMAL: $\pm .002$

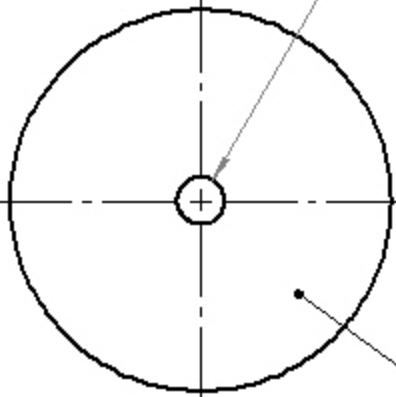
1 REQUIRED
C.R.S.

SCALE: 1=1

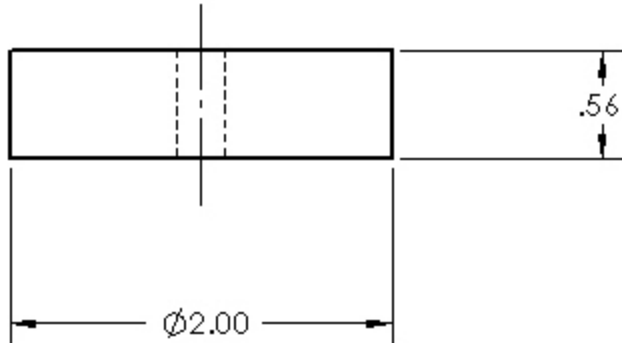
DRAWN BY R. LEETE 178EP11



PRESS FIT FOR
 \varnothing .250 THRU ALL



DISH ONE SIDE IF DESIRED
MINIMUM .13 HUB AND RIM



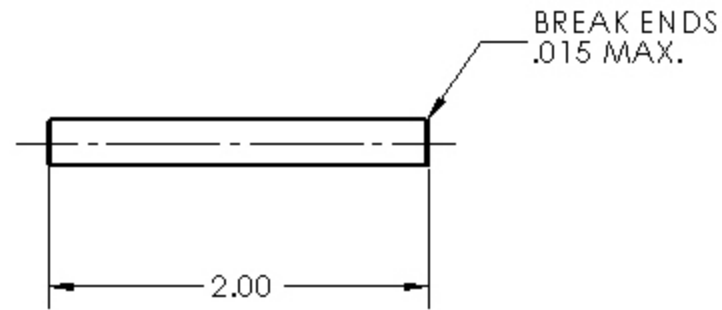
HOBBY-MACHINIST
FLYWHEEL

TOLERANCES:
ANGULAR: $\pm .5^\circ$
TWO PLACE DECIMAL: $\pm .005$
THREE PLACE DECIMAL: $\pm .002$

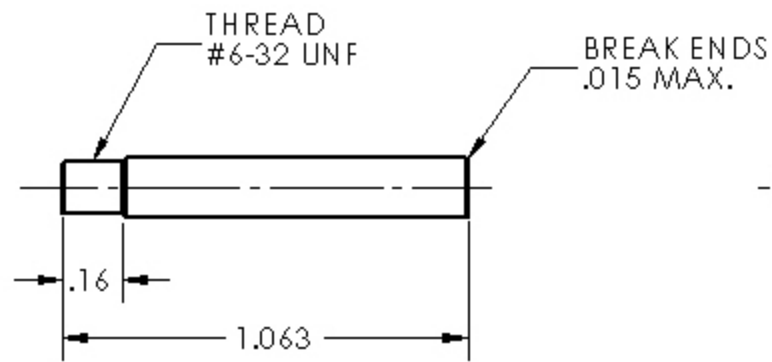
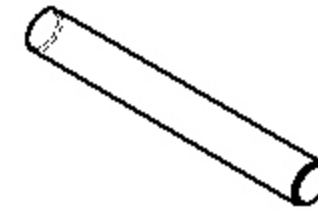
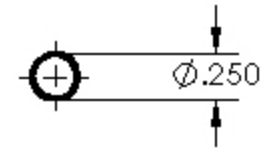
1 REQUIRED
C.R.S.

SCALE: 1=1

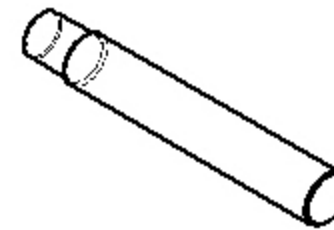
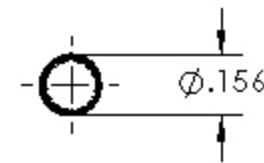
DRAWN BY R. LEETE 178EP11



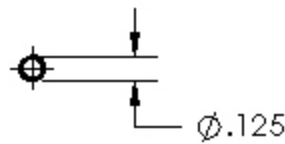
AXLE
DRILL ROD



PIVOT ROD
BRASS



CRANK PIN
DRILL ROD



HOBBY-MACHINIST

AXLE, PIVOT & CRANK PINS

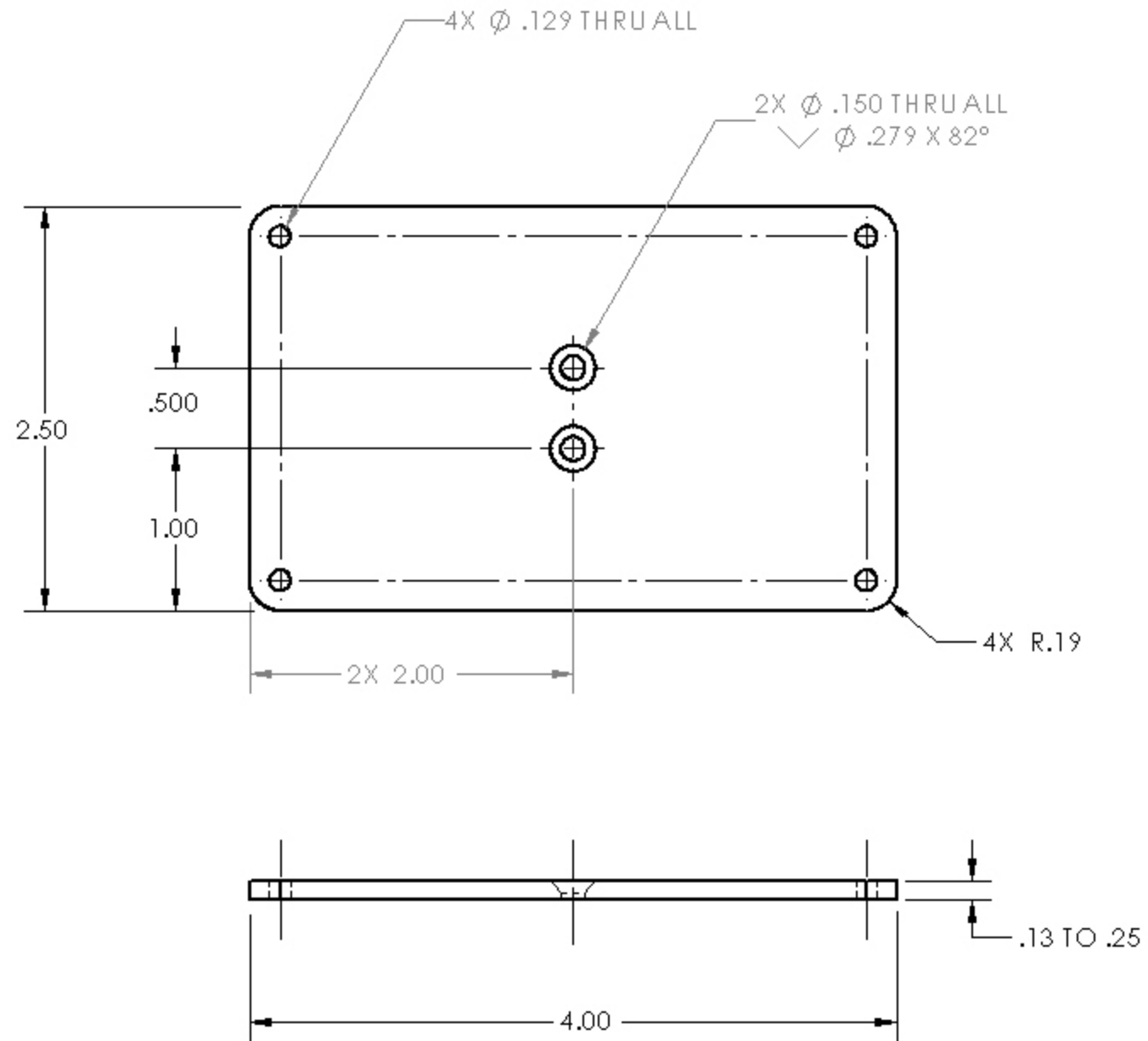
TOLERANCES:

ANGULAR: $\pm .5^\circ$
TWO PLACE DECIMAL: $\pm .005$
THREE PLACE DECIMAL: $\pm .002$

1 EACH
REQUIRED
MAT'L AS NOTED

SCALE: 1=1

DRAWN BY R. LEETE 178EP11



HOBBY-MACHINIST

BASE PLATE

TOLERANCES:

ANGULAR: $\pm 5'$
 TWO PLACE DECIMAL: ± 0.005
 THREE PLACE DECIMAL: ± 0.002

1 REQUIRED
 ALUMINUM
 OR STEEL

SCALE: 1=1

DRAWN BY R. LEETE 178EP11